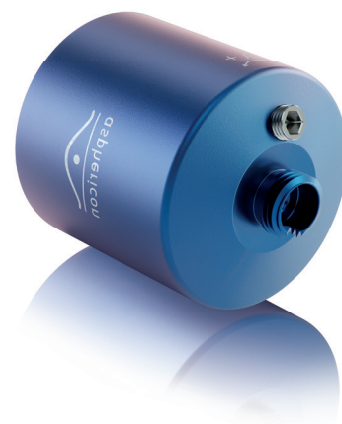


ACM25-20-Y-355

The a|AspheriColl is an adjustable fiber collimation device, which enables the perfect connection of FC/PC patch fibers to your set-up. Combine the world's smartest off-the-shelf fiber collimator for NA's up to 0.275 with BeamTuning or other beam shaping elements to obtain any desired output beam while maintaining a diffraction-limited wavefront.

Key Benefits:

- = Design wavelength: 355 nm, usable wavelength range: 350 - 405 nm
- = Focal length: $f = 20$ mm, with $\varnothing_e = 11.5$ mm
- = Simplified wavelength adaption by setting adjustment unit with SW2 allen key
- = Completely diffraction-limited performance ($\text{Strehl} > 0.95$) when used with FC/PC patch fibers
- = Thanks to matching adapters also usable for APC fibers
- = No truncation effects compared to other available fiber couplers
- = Thanks to bigger output beam diameters, no additional expansion might be needed (shorter system length)
- = Laser induced damage threshold: $12\text{J}/\text{cm}^2$, 100Hz, 6ns, 532nm
For higher laser power applications please request a V-Coating.
Contact us for an individual offer.



Technical Dimensions:

